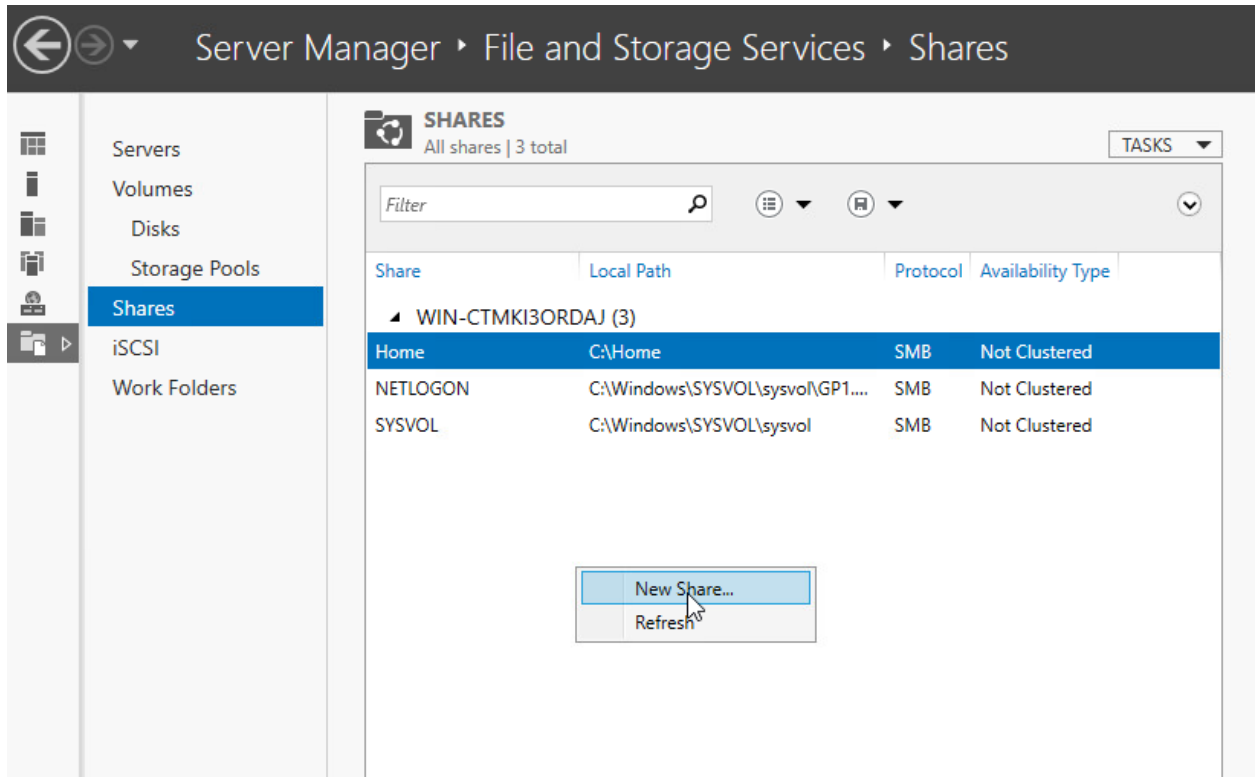


## Making a Roaming user profile

- 1) Open the Server Manager and navigate to the shown area. Right click in the blank space and click New Share.



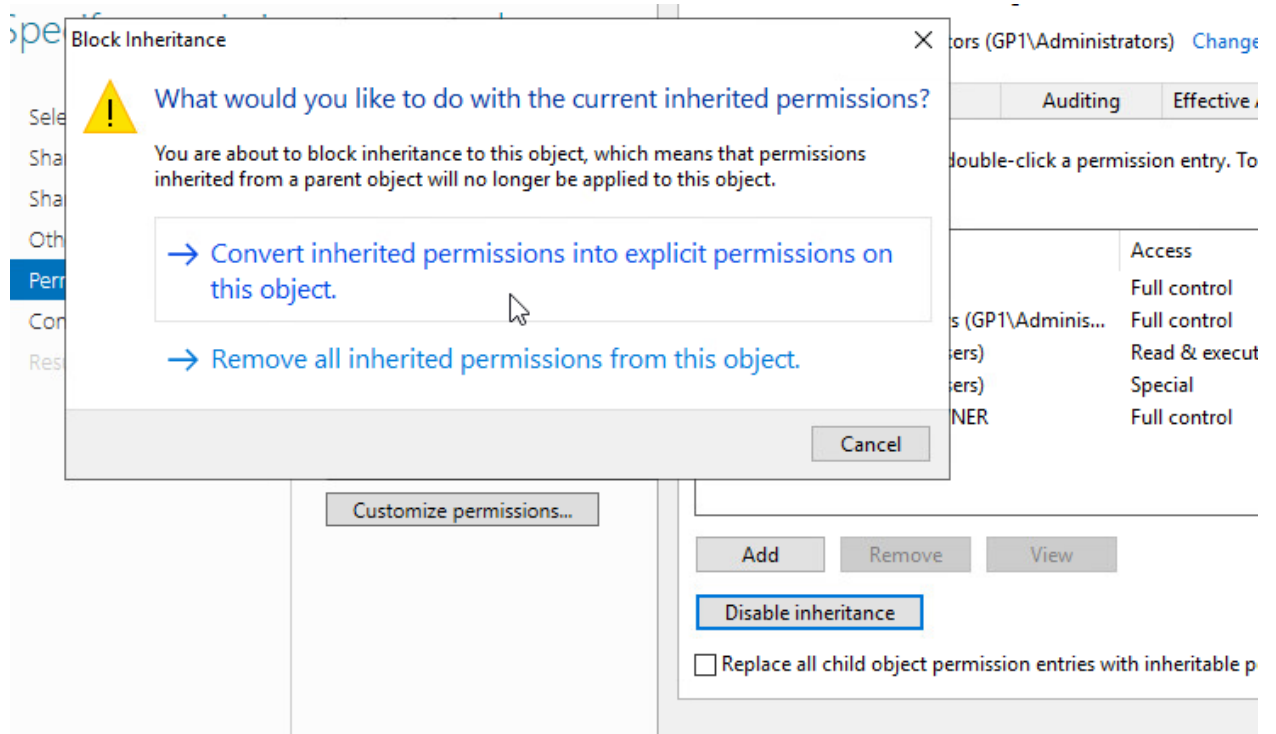
- 2) Select SMB Share – Quick and press Next.
- 3) Select Next at the Share Location screen.
- 4) Give the share a name and click Next. Make sure you add a "\$" after the name of the share to hide it from the user.

The screenshot shows the 'New Share' wizard. The 'Share name' field contains the text 'RoamingProfiles\$'. The 'Share description' field is empty.

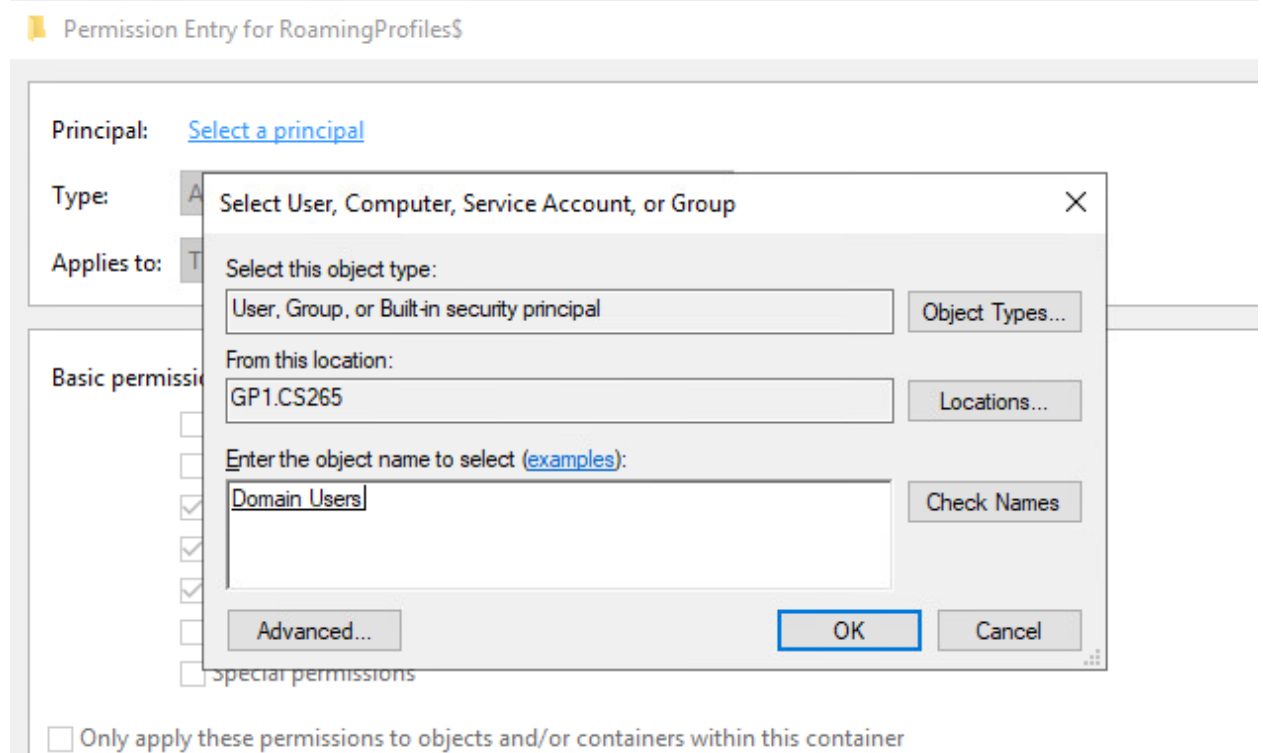
Share name:

Share description:

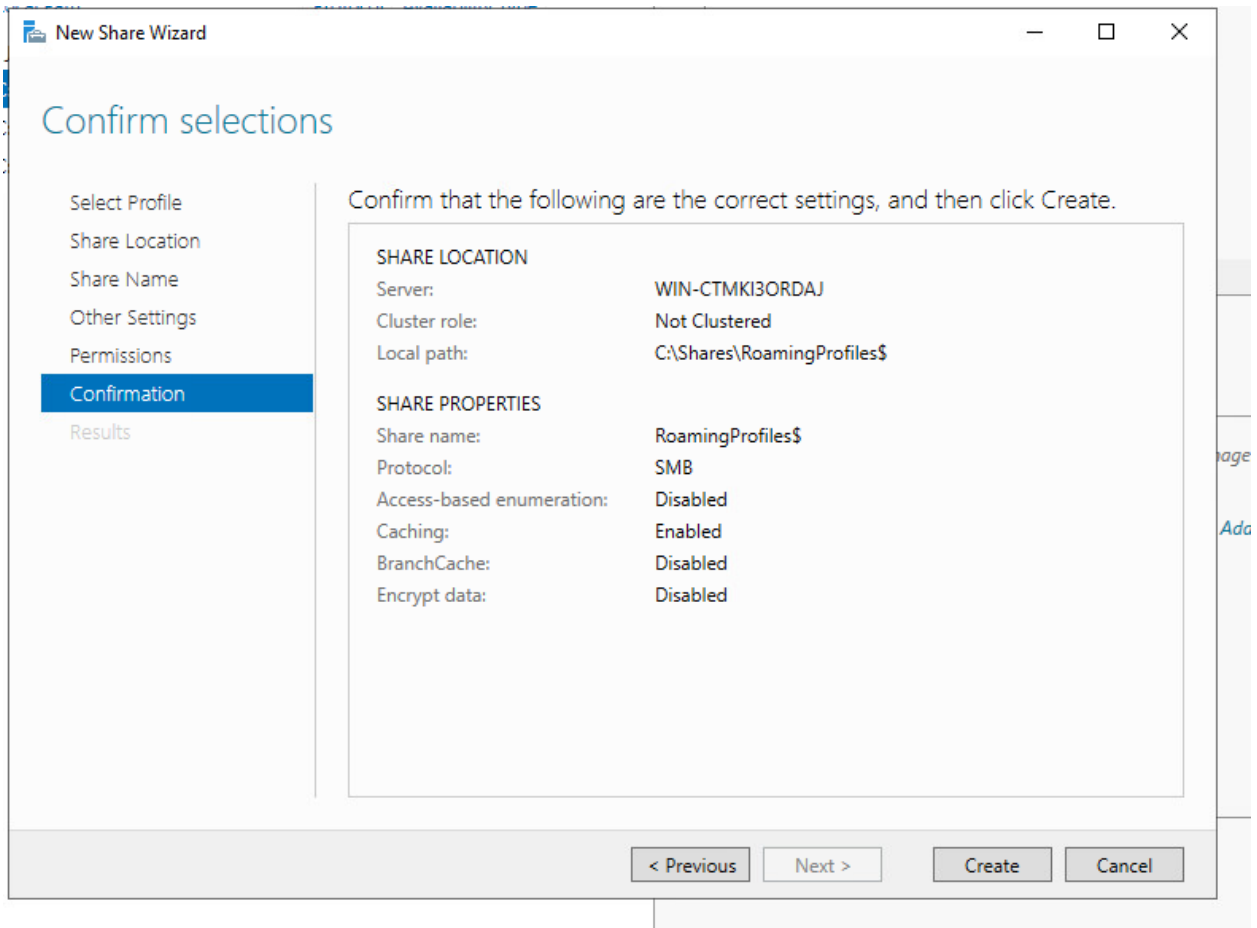
- 5) Click Customize Permissions, then Disable inheritance and convert inherited permissions.



- 6) Click Add, then Select a Principal. Type "Domain Users" then hit Check Names. Press OK.

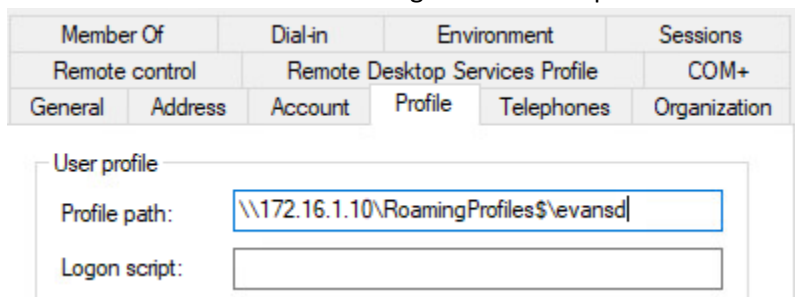


- 7) Click Create when you've finished making the share.



### Making users Roaming Profiles

- 1) Go to Active Directory Users and Computers and edit the properties of the user(s) you want to make roaming.
- 2) Go to Profile and add the following to the Profile path.



Make the last part of this path either the username of the user or %username% if editing multiple users.

This is now a Roaming user.